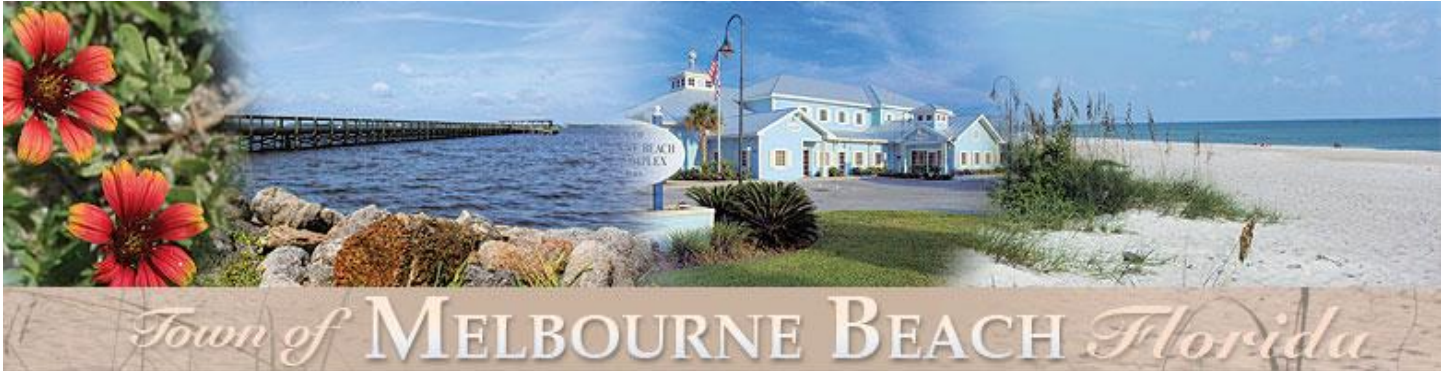


# BEACH COMBER



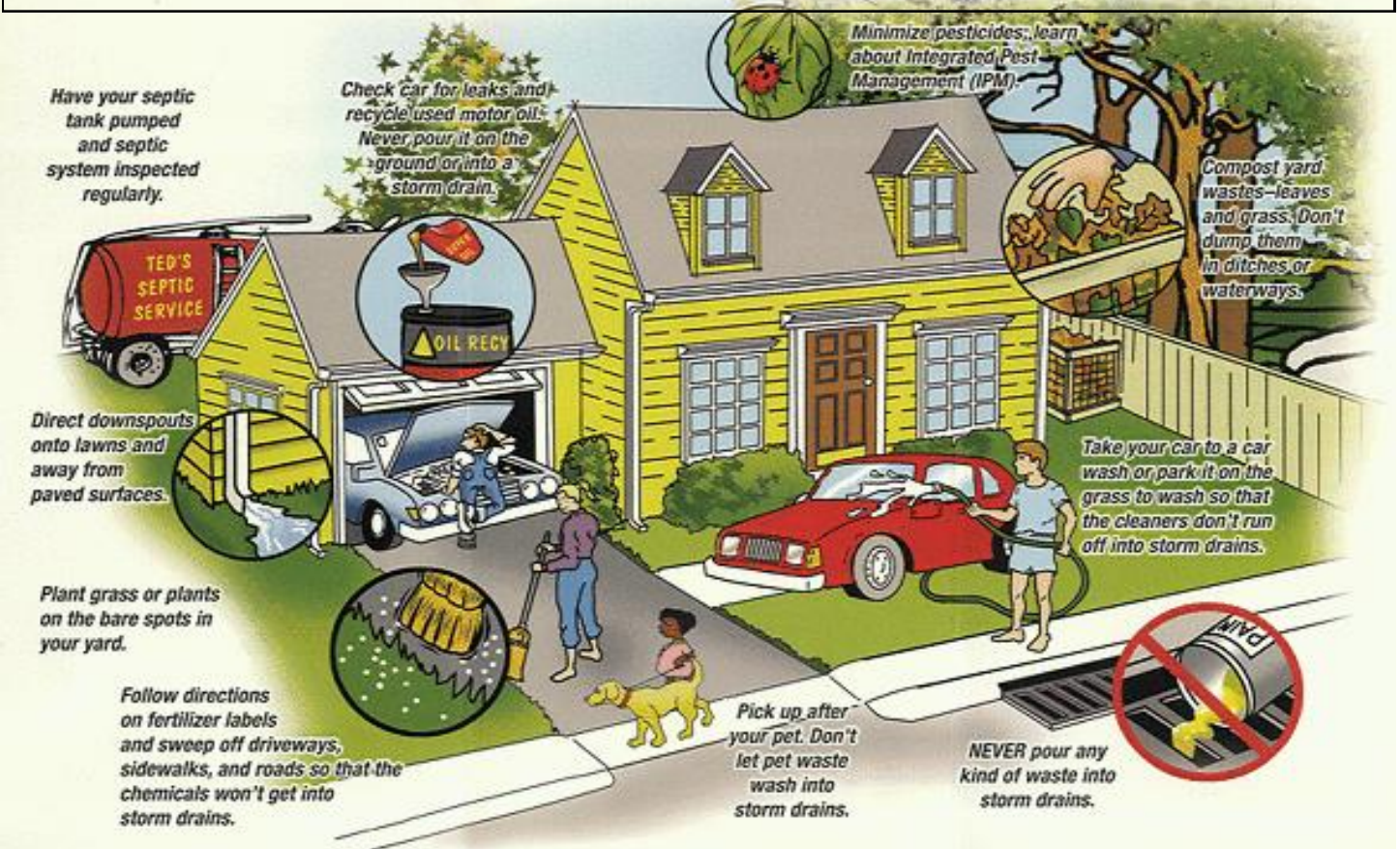
*Town of MELBOURNE BEACH Florida*

## *CHRISTMAS 2018*

**What's else can we say but THANKS to all the little elves who beautified Melbourne Beach throughout the Christmas season. One day there was nothing and days later, beautiful plants appeared throughout Town. Public Works worked very hard putting up the decorations that were purchased with a donation from Melbourne Beach Exxon and other contributions were made by Melbourne Beach Market and Savers Drug Mart. Visitors to Christmas Tree Circle were wowed and praise was plenty! It was a beautiful Christmas season in Melbourne Beach. See pictures on page 2.**

**Thank you Bruce Black for bringing everyone together!!**

Be aware of what you put in storm drains as it may be considered an illicit discharge that will harm our waterways. See the many examples in the image below. If you see what you think is somebody dumping illicit material, please call Town Hall or submit an Illicit Discharge Detection Reporting Form which can be found on the Town's website under *Departments/Stormwater*.



## Calling all Birds of Prey Enthusiasts

### Bald Eagle sightings in Melbourne Beach

Since November 23, 2018, there have been many bald eagle sightings in our area (see maps).

The birds may nest soon so we're asking that Town Hall be notified of any sightings so we can forward the information to the Audubon Society to keep track of where these marvelous creatures are hanging out and if they settle down to nest.

According to the FWC, Florida has one of the densest concentrations of nesting bald eagles in the lower 48 states, with an estimated 1,500 nesting pairs. It is no longer an endangered species but remains on the protected list. The Bald Eagle has been the national emblem of the United States since 1782 and a spiritual symbol for native people for far longer than that.

[townclerk@melbournebeachfl.org](mailto:townclerk@melbournebeachfl.org) or 321-724-5860  
<http://fl.audubon.org/get-involved/audubon-eaglewatch>



For those of you who have walked through Ryckman Park, you've probably noticed the nearly new playground equipment. The Public Works Department took on the challenge of repairing/replacing all the equipment themselves. It has been challenging but they have almost finished and it looks fantastic. A volunteer group, led by Bruce Black, also got all the new engineered wood fiber mulch spread throughout the playground area. This mulch is a specially designed for playgrounds because there are no rough edges and it is non-toxic.



**A link to the survey can be found at [www.melbournebeachfl.org](http://www.melbournebeachfl.org)**

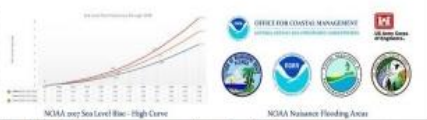
**Give us your thoughts!**

### Take the Short Survey and Make Your Voice Heard

As a coastal city, Melbourne Beach is vulnerable to various natural hazards. Residents, business owners, and the Town need to work together to turn challenges into opportunities for a thriving and resilient future for our Town.

#### PLANNING FOR RESILIENCY MELBOURNE BEACH, FL

Planning for resiliency in Florida involves identification of potential future hazards using NOAA's Coastal Storm Surge and Storm Surge and Sea Level Rise (CSLRR) tool. The tool uses data from the Army Corps of Engineers and the National Oceanic and Atmospheric Administration (NOAA). The tool uses various modeling options provided by NOAA. Additional information is available in the report titled "Resilient Melbourn Beach" at [www.perilofflood.net/melbournebeach](http://www.perilofflood.net/melbournebeach).



Resiliency pertains to the ability of individuals, communities, institutions, businesses and systems within a region to recover from specific vulnerabilities such as acute threats like a hurricane or chronic, long term stresses such as sea level rise.

How the community prepares for acute shocks and chronic stresses will impact how the residents and businesses sustain, adapt, recover, improve and grow collaboratively.

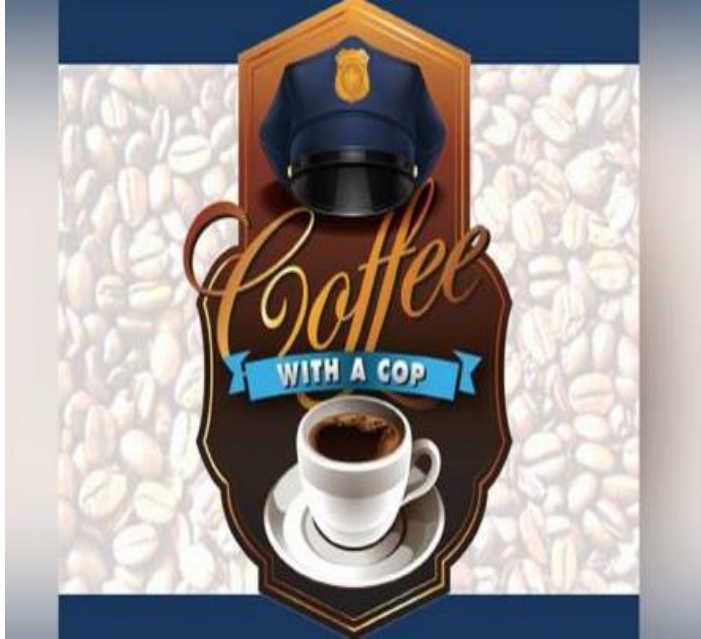
Specific actions and implementation of strategies can assist the community to survive vulnerabilities that would otherwise weaken them.

As a resident or business owner in Melbourne Beach, your thoughts and priorities are important because this is your community and we want to make sure your opinions and thoughts are considered.

For more information relating to the work being accomplished in Melbourne Beach, visit Resilient Melbourne Beach at [www.perilofflood.net/melbournebeach](http://www.perilofflood.net/melbournebeach)



# Coffee With A Cop



Get to know your officers!

Meet with Melbourne Beach Police Chief Griswold and her Command Staff for a chance to ask questions, voice concerns and whatever else comes up.

When: Monday, February 11th from 7am - 8:30am

Where: Oceanside Pizza at 300 Ocean Avenue

Coffee, OJ, Bagels and Danishes will be served.

## **Bicentennial Park Help Needed**

To help, call the Beautification Committee at 321-984-2221

by [Crystal Cain](#)

Have you noticed the crazy lights in Bicentennial Park? The lights were generously donated in October by our local DAR Chapter and they also spent \$200 for native plants for the Park. Chapter president Jo-Solley Hansen and other members of her Chapter chose Bicentennial Park as the recipient of their annual Regeant's project and they joined the Beach Gardeners Club members to work, weed and plant the donated plants. Victoria Dayle headed up CAR which is the children's chapter of DAR. She and Troy helped that day and continue to volunteer with the Beach Gardener's members. Many, many, thanks go to DAR and CAR!!!!

Let's not forget Master Gardener member Joan Byrd and her son, Curtis Byrd, who donate and plant poinsettias at Christmas time every year. It has become a wonderful tradition and we thank you so very much.

Fittingly, our Town named the grassy median strip *Bicentennial Park* in 1976. Its location as an entryway from north A1A into our Town caught the attention of the Beach Gardeners'. In 1989, it became the Club's centerpiece project to be *Maintained and Nurtured by Beach Garderners'* as the big green sign reads. 32 sabal palms were donated and planted in 1990. Later, a plan was designed and an irrigation system was installed and planting areas were created. It has evolved over time in design becoming the beautiful park it is today.

Many years have passed and it has become more difficult for the members to maintain the park; we are unable to keep up with the ambitious plans we made years ago. It would be so helpful if we could get some help from individuals or groups. This would also be a wonderful opportunity to get involved and get in the community spirit. The current need includes weeding the beds and then spreading mulch among them. Any amount of help will be greatly appreciated.

About the Beach Gardener's Club:

The Club had their first official meeting in 1961- Annie Hellen Thomas was our president. By 1982, this small group of men and women had planted over 1,000 palm trees along Ocean Avenue, Sunset and in the rights of way. Butterfly gardens were planted annually at Gemini Elementary as were sea oats. Remember the Election Day plant sale? The Club attends the annual Founder's Day event and invites children to decorate and plant a flower of their choice to take home. The history of the Club is rich and touches the entire community.

# Upcoming Town Meetings

Meeting	Dates	Time	Location
Town Hall Closed - Holiday	February 18		
Planning & Zoning Board Meeting	January 8, February 5, March 5	7:00 p.m.	Community Ctr
Town Commission Workshop	January 9, February 6, March 6	6:00 p.m.	Town Hall
History Center Board Meeting	January 3, February 7, March 7	5:30 p.m.	Old Town Hall
Parks Board Meeting	January 9, February 13, March 13	7:00 p.m.	Town Hall
Historic Preservation & Awareness	January 8, February 12, March 12	4:30 p.m.	Ryckman House
Town Commission Regular Meeting	January 16, February 20, March 20	6:30 p.m.	Community Ctr.
Environmental Advisory Board	January 23, February 27, March 27	7:00 p.m.	own Hall
Melbourne Beach Volunteer Fire Dept.	Every Tuesday	7:00 p.m.	Town Hall
AA	Every Wednesday	7:30 p.m.	Old Town Hall
Beach Gardeners of Mel Beach	January 15, February 19, March 19	6:30 p.m.	Community Center


  
**Sea Oat Planting**  
 Saturday, February 9, 2019 at 9 am  
Planting, cleanup, and removing exotics  
 Sponsored by the Sea Turtle Conservancy and the Town of Melbourne Beach



Meet at Loggerhead Park on A1A (end of Surf Rd.)  
*Great opportunity to earn service hours!*  
 Bring water, gloves, water, tools, sunscreen, bug spray and clothes/shoes you will not mind getting dirty.  
 For more information, contact:  
 Melbourne Beach Environmental Advisory Board @321-724-5860  
 or Curtis Byrd @ (321) 266-0794

Jim Turner, president of the Melbourne Beach Volunteer Fire Department, was made aware of a need for funds to build a new playground in Ryckman Park. The MBVFD decided to donate the proceeds from their pancake breakfast to the Town for this effort. A check was presented to the Commission in the amount of \$1,022.81. **HUGE THANKS** to MBVFD, Inc. for their generous donation.



If you see our new Police Officer around Town, introduce yourself; his name is Ryan McDuffie. He was



sworn in recently and is pictured here with his wife Tara.

**The Riverside Drive/ Andrews Drive storm-water project has been completed. We appreciate the patience of, and inconvenience endured by, our residents during this tough time.**