

January 2012

Vol. 21 Issue 1

507 Ocean Avenue
Melbourne Beach
Florida 32951



TOWN OF MELBOURNE BEACH
BREVARD COUNTY'S OLDEST BEACH COMMUNITY • ESTABLISHED 1883

BEACH COMBER

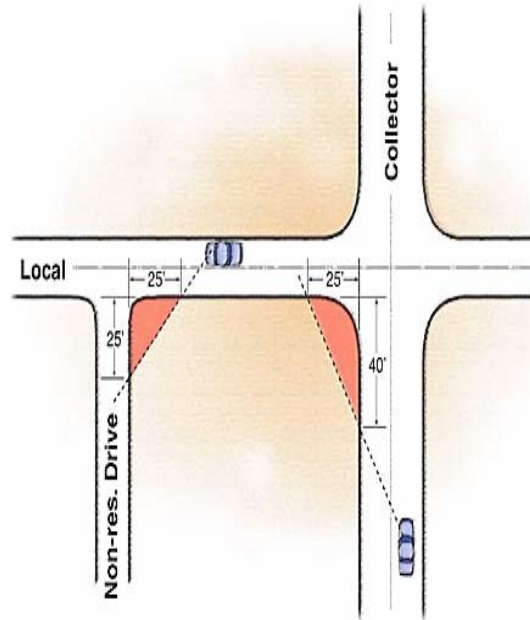
Open Your Eyes, Open The Vision Clearance Triangle

Melbourne Beach boasts some of the area's most plentiful greenery which adds to the beauty and island charm for all to enjoy, however, there are areas where greenery such as bushes, trees and flowers do not belong in the interest of safety. I am sure many of you have noticed street intersections where the "Vision Triangle" is obscured, which presents an unsafe condition for motorists, bicyclists and pedestrians. The obstructed field of view creates a significant hazard and must be corrected for the safety of all involved.

The property owner is ultimately responsible to prune or cause to be pruned, the foliage to the point where it no longer obstructs the field of view necessary for safety. In some cases it may be essential to remove foliage from this area. Nothing within the vision clearance triangle shall be erected, placed, planted or allowed to grow in such a manner as to materially impede vision between the height of 30 inches and ten feet above the centerline of grades of intersecting streets

What is a Vision Clearance Triangle?

A triangular area at the intersection of two streets measured from the corner 25 feet in each direction and connected to form a triangle. In the case of a collector street such as HWY A1A, the measurement is extended to 40 feet on the collector street.



Elected Officials

Mayor Tom Davis

Vice Mayor April Evans

Comm. Jean Marshall

Comm. Jay Gurecki

Comm. Rocco Maglio

Town Staff

Town Manager

Bill Hoskovec

**

Town Clerk

Rhonda Danielle

**

Police Chief

Dan Duncan

**

Public Works Director

Daniel Rocque

**

Town Accountant

Vacant

**

Fire Chief

Jim Hunter

**

Building Official

Bob Phoenix

So let's all work together and make Melbourne Beach our little piece of paradise and one that is safe. Open your eyes and open the Vision Clearance Triangle.

I wish to thank you for your attention to this matter and should you have any questions or concerns, please feel free to contact me.

Sincerely,

Daniel H. Rocque—Public Works Supervisor



Inattentive Driving:

The Issue:

Have you ever eaten fast food, talked on your cell phone, blared the radio or CD player, shaved, put on makeup, lit a cigarette, combed your hair, dealt with a screaming child in the backseat, picked something up off the floor, rode with a pet on your lap or read directions while driving? If so, you are guilty of inattentive driving.

Crashes due to driver inattention or distraction are on the rise in the United States. They are taking more lives and injuring more people than ever before. The National Highway Traffic Safety Administration estimates that 25 percent of all police-reported crashes involve some form of driver inattention.

Driver distraction is nothing new. More than 70 years ago, lawmakers pondered whether radios should be allowed in cars. Some states banned them; others decided radios were tolerable as long as they were turned off while driving. Today, some of the biggest distractions include radios, cell phones, fast food, CD and media players, children and pets.

What You Can Do:

- Before you drive, remove or secure any loose articles (cans, bottles, books) that could roll around or fly toward you in the event of a quick stop.
- Remember, driving may be the only break you get from the everyday life. Why complicate your life by multitasking while driving? Slow down, stay alert and enjoy your drive.
- Don't talk on a cell phone while driving. If absolutely necessary, use a hands-free device or pull over in a well-lit area to continue the conversation. Some states are restricting the use of cell phones while driving to only hands-free devices and emergency instances.
- Limit your changing of radio stations and CDs. It only takes a brief moment for your eyes to be off the road to cause a collision.
- Although entertainment devices such DVD players and electronic games can be enjoyed by passengers in the vehicle, as a driver, do not become distracted by these devices. Lower their volumes, and never try to watch these devices or tinker with them while driving.
- Don't light a cigarette while driving. If you drop it, look out!
- Eating and drinking beverages while driving can be dangerous. Simply stop and eat at a restaurant or rest area. If you spill a drink, pull over to clean up the mess. Driving while trying to clean coffee off your pants can be a deadly combination.
- You have a responsibility to operate your vehicle in a safe manner. Do it!

Always buckle up.

Chief Dan Duncan

Meetings

Historic Center Bd-	01/05 @ 7:00	Parks Board-	02/14 @ 6:30
Planning & Zoning-	01/09 @ 7:00	Town Commission-	02/15 @ 6:30
Parks Board-	01/10 @ 6:30	Board of Adjustment	02/16 @ 6:30
Town Commission-	01/18 @ 6:30	Env. Adv. Board-	02/22 @ 6:30
Board of Adjustment-	01/19 @ 6:30		
Env. Adv. Board-	01/25 @ 6:30		
History Center Bd-	02/02 @ 7:00		
Planning & Zoning-	02/06 @ 7:00		

All times are PM unless otherwise noted



Beach Gardeners of Melbourne Beach

The Beach Gardeners of Melbourne Beach will be having a meeting on Tuesday, January 17, 2012 at 6:30 pm at the Melbourne Beach Community Center.

The speaker for this meeting will be Vern Block who will be speaking on the topic of "Orchids 101".

There will be a plant swap table and refreshments. Visitors and new members are welcome.

If you have any questions please contact Carolyn Lavrack at 723-4180.

Everything you wanted to know about Stormwater but were afraid to ask.



Things that your household can do.

Garage and Vehicles

Check all vehicles, boats and equipment for any leaks. If found please repair as soon as possible.

Recycle all vehicle fluids and/or dispose of in your trash.

Use a commercial car wash to keep your vehicles clean. This will keep the chemicals from entering the storm drains.

Lawn and Garden

Landscape contractors are required to remove any waste that they prune or cut; it is not a portion of the Waste Pro contract to remove waste that has been placed on the side of the road by private contractors. Everyone is reminded not to blow or distribute lawn clippings into the roadway or in the stormwater sewer. These continue to the lagoon and cause additional pollutants.

Cover dirt and mulch for future landscaping projects.

Plant new vegetation in bare areas of your yard to prevent erosion.

REMINDER: Ordinance Number 2010-03 expressly states: —No Applicator shall apply Fertilizers containing nitrogen and/or phosphorus to turf and/or landscape plants during the Prohibited Application Period. Typically, that period is from June 01 – September 30, the rainy season. Fertilizers applied to turf and/or landscape plants with the Town shall be formulated and applied in accordance with Rule 5E-1.003 (2), of the Florida Administrative Code. In other words, the fertilizers should be Eco-friendly.

Taking these concerns in hand will reduce the Town's pollution load on the Indian River Lagoon and continue to enhance the splendor of what we know as beautiful Melbourne Beach. Being good stewards of one of the Town's most valuable assets, it is important to bear in mind the impact that we can leave for the future generations

Continued on next page

Care

Pick up after your pets. If pet waste is left it can cultivate bacteria that can be harmful to the bodies of water that it will wash into.

Pools and Spas

Only drain pools and spas when the test kit shows that there is no chlorine in the water. If at all possible drain these items into a sanitary sewer system instead of a storm drain.

Things that you can do to keep the stormwater system functioning

Clear or clean the drain structures.

Keep grass clippings and other debris out of stormwater drains to prevent clogging.

Remove nuisance and excess vegetation from yards before a storm.

Repair eroded patches of ground.

Remove trash and yard wastes from gutters and around storm drains.

Report clogged culverts or slow-moving water in drains to the Melbourne Beach Public Works office.

Do not fill swales or retention systems with dirt, yard waste or other debris, or reduce the size of the stormwater pond.